

COLOR SCHEME 1

BODY COLOR 1
SW 7077
ORIGINAL WHITE

1.

BODY COLOR 2
SW 0023
PEWTER TANKARD

2.

BODY COLOR 3
SW 9182
ROJO MARRON

3.

FIBER CEMENT
LAP SIDING
SW 9182
ROJO MARRON

4.

ENTRY 1
SW 2837
AURORA BROWN

5.

ENTRY 2
SW 2861
AVOCADO

6.

WINDOW FRAME
WHITE

7.

AWNING, METAL
RAILING,
FIBERCEMENT TRIM
SW 7645
THUNDER GRAY

8.

GARAGE DOOR 1
SW 7645
THUNDER GRAY

9.

GARAGE DOOR 2
SW 6076
TURKISH COFFEE

10.

COLOR SCHEME 2

BODY COLOR 1
240 JET GREY
OMEGA STUCCO

1.

BODY COLOR 2
SW 7077
ORIGINAL WHITE

2.

BODY COLOR 3
SW 2807
ROOKWOOD
MEDIUM BROWN

3.

FIBER CEMENT
LAP SIDING
SW 2807
ROOKWOOD
MEDIUM BROWN

4.

ENTRY 1
SW 7604
SMOKY BLUE

5.

ENTRY 2
SW 2861
AVOCADO

6.

WINDOW FRAME
WHITE

7.

AWNING, METAL
RAILING,
FIBERCEMENT TRIM
SW 7645
THUNDER GRAY

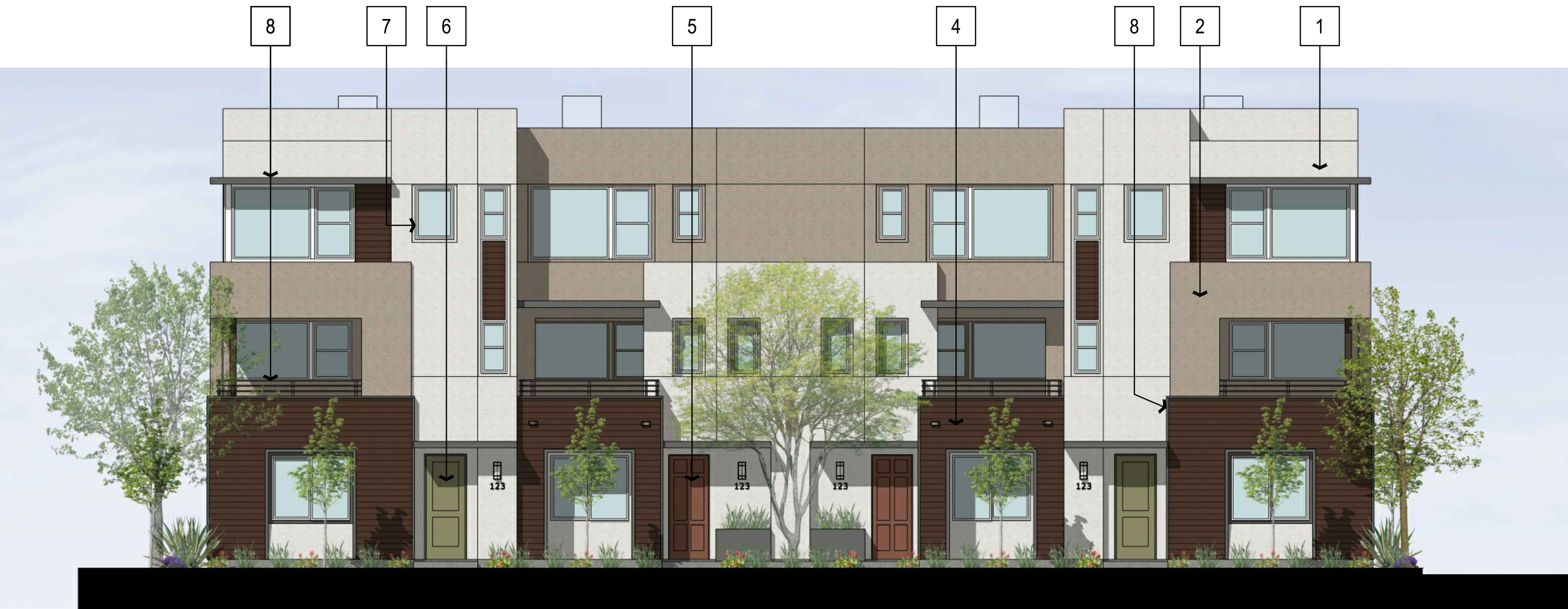
8.

GARAGE DOOR 1
SW 7645
THUNDER GRAY

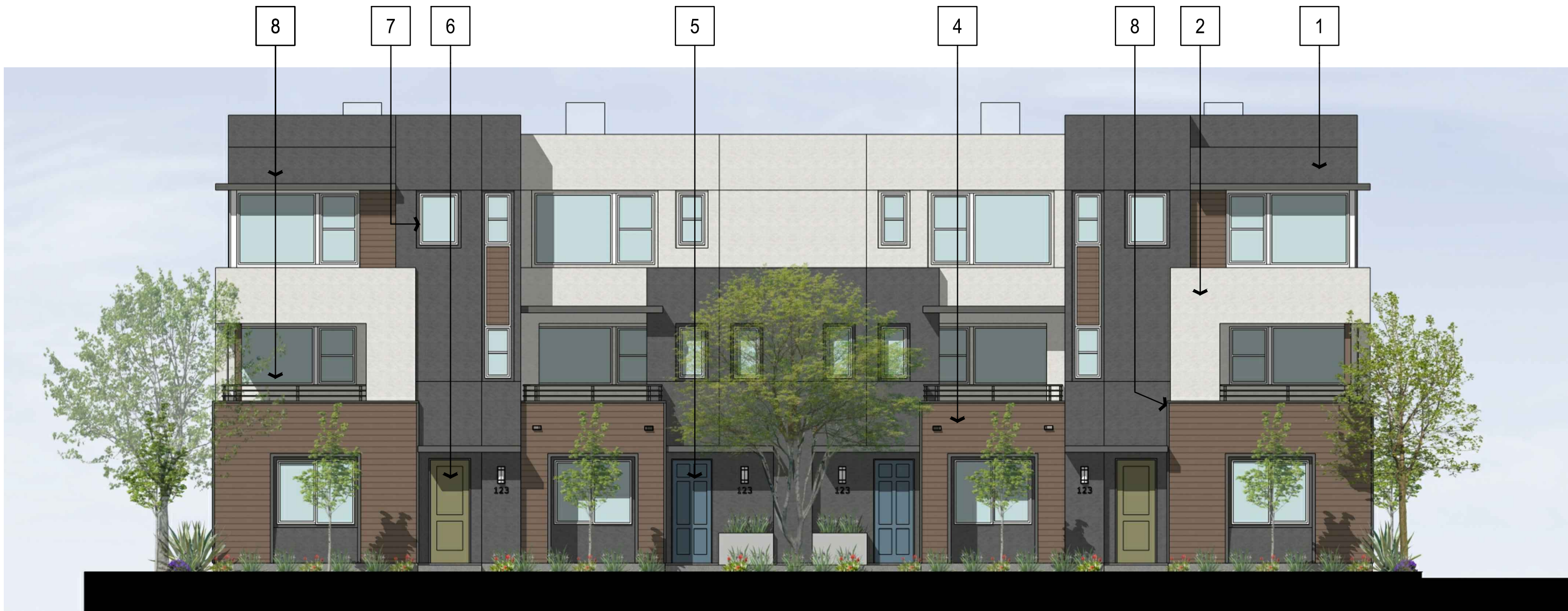
9.

GARAGE DOOR 2
SW 6076
TURKISH COFFEE

10.



COMPOSITE TYPE 4-PLEX A



COMPOSITE TYPE 4-PLEX A



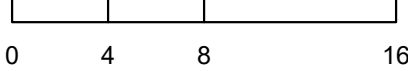
Architecture + Planning
17911 Von Karman Ave,
Suite 200
Irvine, CA 92614
949.851.2133
ktgy.com



Warmington Residential
3090 Pullman Street
Costa Mesa, CA 92626
714.434.4439

717 S. LYON STREET
SANTA ANA, CA KTGY # 2021-0430

Plot Date: 6/6/2022
1st Submittal: 12-16-2021
2nd Submittal: 04-13-2022
3rd Submittal: 06-06-2022



COLOR AND MATERIAL BOARD

A4.00